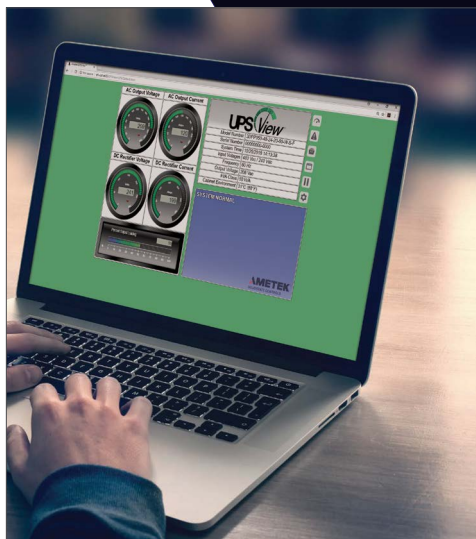


UPS View

REMOTE MONITORING SOFTWARE

UPSView remotely monitors your AMETEK Solidstate Controls digital inverter, charger/rectifier or Uninterruptible Power Supply (UPS) System, giving you a real-time view of the health and status of your power quality system.

The user-friendly communication package operates as an interactive and secure web interface, monitoring multiple units from any web enabled device. UPSView enhanced online capabilities include:



- Annunciation of system measurements and status on the Homepage or Web browser tab
- Extended data logging, including event description, time and date stamping and system readings
- Single-click navigation to user-configured alarms and system settings
- Report generation of Data Logs, Battery History Logs and Battery Test Logs
- Pause and Play capabilities to freeze momentary data
- Access to snapshots of all Data Log parameters

AMETEK[®]

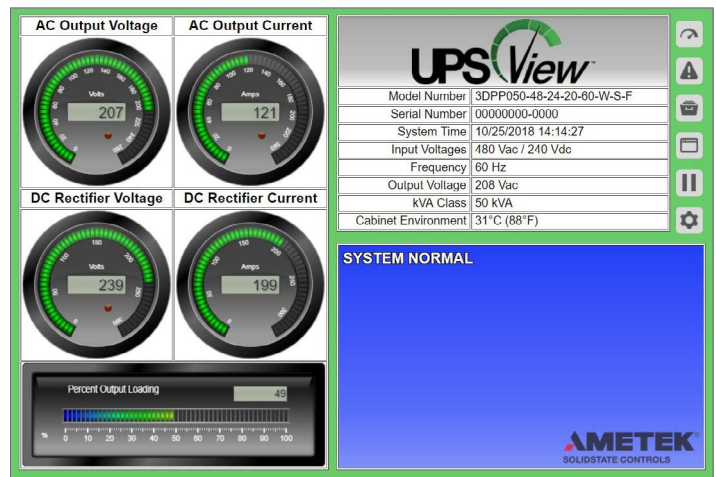
SOLIDSTATE CONTROLS

PROVIDING CONTINUITY OF ELECTRICAL POWER

MONITOR YOUR SYSTEM

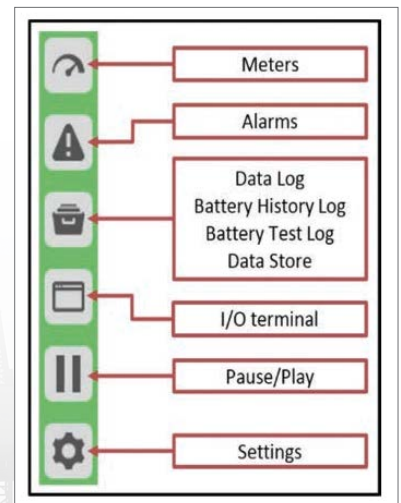
UPSView allows the user to completely monitor and maintain familiarity with their systems. The Homepage for each system displays the unique system configuration, active alarms and critical system measurements.

The UPSView Homepage will react to the data it is collecting, accented by a green background during normal system operation and red when a system is experiencing trouble. The interface supports multi-system monitoring, annunciating trouble in a specific system on its corresponding Web browser tab.



NAVIGATE SIMPLY

- Easily navigate through the interactive UPSView Web interface by simply clicking one of the buttons on the Homepage.
- Monitor all enabled alarms and meters and their current status.
- Open data history logs in new web pages to maintain records locally or troubleshoot your system.
- All logs are capable of being exported and generated as a report.
- Observe communication between the Web browser and the server through an I/O Terminal.
- Control the polling of information from the server using the Pause/Play Button. When the polling is active, the system readings will be updated every 2 seconds.



TRACK HISTORY

- Track events through UPSView's extensive Data History Logging Features.
- Retain battery history and statistics through the use of a detailed Battery History Log.
- Generate Battery Test reports

Number	Event	Date	Time	
1	FLT Mode Initialized	9/05/2014	13:01:47	View
2	EQU Mode Initialized	9/05/2014	13:01:43	View
3	Battery Charging	9/05/2014	13:01:43	View
4	Battery Discharging	9/05/2014	12:59:52	View
5	Charger Normal	9/05/2014	12:49:08	View
6	Charger Failure	9/05/2014	12:49:07	View
7	Charger Bd. Reset	9/05/2014	12:49:05	View
8	Transfer To Inverter	9/05/2014	12:48:08	View
9	Inverter Normal	9/05/2014	12:47:57	View
10	Battery CB Closed	9/05/2014	12:47:47	View
11	Charger Normal	9/05/2014	12:47:46	View
12	DC Voltage Normal	9/05/2014	12:47:35	View
13	Low DC Voltage	9/05/2014	12:47:33	View
14	System Reset	9/05/2014	12:46:47	View
15	Low DC Voltage	9/05/2014	12:46:03	View
16	Inverter Failure	9/05/2014	12:46:02	View
17	Charger Failure	9/05/2014	12:46:01	View
18	DC Too Low For Start	9/05/2014	12:46:00	View
19	Inverter Low V (fast)	9/05/2014	12:46:00	View

Downloads: [Data Log](#) [Data Log \(Extended\)](#) [Data Log \(CSV\)](#) 22 Events Logged

WORLD HEADQUARTERS
875 Dearborn Drive
Columbus, Ohio 43085
Phone: +1-614-846-7500
Toll Free: +1-800-635-7300
Fax: +1-614-885-3990

GLOBAL OFFICES LOCATED IN
Mexico Middle East
Asia Pacific India
Brazil Argentina

WEBSITE
www.solidstatecontrolsinc.com

EMAIL
SCI.sales@AMETEK.com



REV 01/2026

THE PURPOSE OF OUR BUSINESS IS TO PROVIDE CONTINUITY OF ELECTRICAL POWER TO KEEP BUSINESSES IN BUSINESS.

WE DO THIS BY HELPING CLIENTS SOLVE THEIR POWER PROBLEMS AND BY CREATING THE MOST ECONOMICAL LONG-TERM RESULTS.